

# Parent AI: Awareness and Involvement

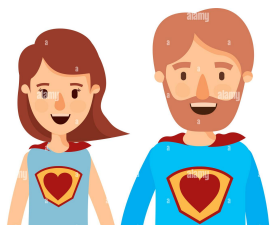
## The most important AI.

Once a week, watch your children answer math facts.

It takes less than two minutes. Your children will practice more, and with more effort.

Even better, do the Math Facts Mad Dash with your children.

If your children's teachers are not doing the Dash, be a hero. Help bring the Dash to school.



## Be a Hero!

Bring the Math Facts Mad Dash  
to your children's school.

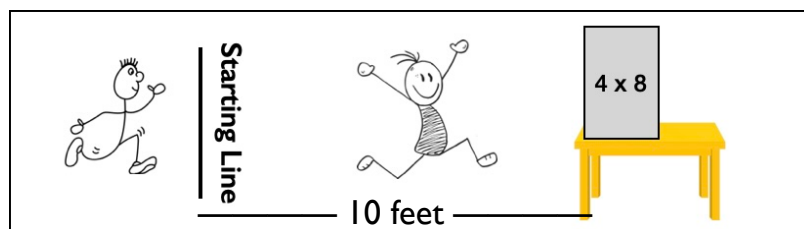


Every teacher wants two things:

1) Children to learn math facts at home.

2) Parents to be aware and involved.

You can make both happen.



The Dash is a relay race with math facts.

**Get the app.** It's free at [studysmart.com](http://studysmart.com). **Do the Dash.**

Choose a list. Select the options and mark a starting line.

Get familiar with the app. Create your own lists. It's easy.

If you have questions, see the manual at [studysmart.com](http://studysmart.com) or ask Mitch\*.

Watch your children do the Dash. Do it with them.

Give your child *Master Math Facts in Five Minutes a Day*. (Pages 4-5)

**Share the Dash with your child's class.**

Ask the teacher if you can demo the Dash in the classroom.

Set up a Dash station at recess.

Give the teacher page two of this document.

**Share the Dash with a parent volunteer in another classroom.**

If teachers create teams of four, teams from both classes can race at the end of the week.

\* Mitch is a retired teacher. He has a post-graduate degree in Instructional Design.

He helped create the app and the Dash. [mitchell@studysmart.com](mailto:mitchell@studysmart.com)

### Options

Multiple Choice: On

Speed Mode: On

Timer: Off

Practice Mode: On

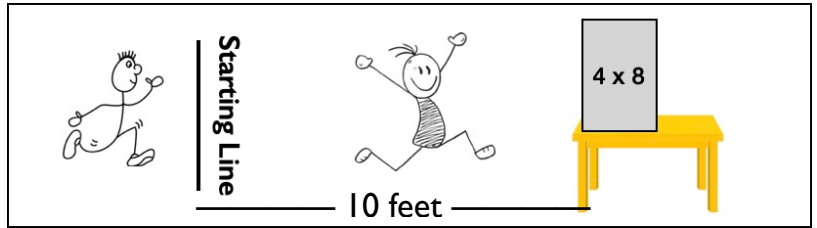
# Teachers, Do the Dash:

Bring math facts practice onto the playground and into the home.

Children WANT to practice at home.

Parents are aware and involved.

No cost. No class time. No paperwork.



The Dash is a relay race with math facts.



The Trojan Horse rides again.

Many years ago, Greek soldiers used the Trojan Horse to get past the gates of Troy.

Use the Dash to bring math facts practice into homes.

## Try the Dash at recess:

Choose a set of facts. Get the app free at [studysmart.com](http://studysmart.com).

Choose one of the ready-made lists, or ask a volunteer to create a list.

Suggestion: Less is more. Start with a list of eight facts (Add 2s, 3s, 4s...Mult 2s, 3s, 4s)

## Create teams of four. It's OK if some teams have three.

Teams can practice at recess.

If your colleagues do the Dash, have a race on Fridays, at recess or right after.

Races take less than a minute, and add fun, motivation, and teamwork.

Each week choose two teams to race on Friday.

## Race with colleagues. Challenge your students.

After you watch students race on Fridays, challenge the winners.

Get three of your colleagues to join you. It's more than fun. It motivates students to practice.

## See the Teachers Guide at [studysmart.com](http://studysmart.com).

If you have any questions, contact Mitch.

Mitch is a retired teacher. He has a post-graduate degree in Instructional Design.

He helped create the app and the Dash. [mitchell@studysmart.com](mailto:mitchell@studysmart.com)

# Running the Math Facts Mad Dash Station

## Choose a List

- Tap on Change List
- Select a list.

## Create a List

- Tap on Change List
- Tap ADD
- Name List
- Tap on Facts
- Tap SAVE

**Mult 8s**

**Sarah**

Change  
List

Change  
User

Start

## Choose facts. Name your list.

$3 \times 2$

$4 \times 2$

$5 \times 2$

$6 \times 2$

$3 \times 3$

$4 \times 3$

$5 \times 3$

$6 \times 3$

$3 \times 4$

$4 \times 4$

$5 \times 4$

$6 \times 4$

$3 \times 5$

$4 \times 5$

$5 \times 5$

$6 \times 5$

$3 \times 6$

$4 \times 6$

$5 \times 6$

$6 \times 6$

$3 \times 7$

$4 \times 7$

$5 \times 7$

$6 \times 7$

$3 \times 8$

$4 \times 8$

$5 \times 8$

$6 \times 8$

$3 \times 9$

$4 \times 9$

$5 \times 9$

$6 \times 9$

## Options

Multiple Choice: On  
Speed Mode: On  
Timer: Off  
Practice Mode: On

**Sound:** If on, you hear the fact, and sound effects when correct.

**Multiple Choice:** If on, the user taps on the answer.  
If off, the user enters the answer.

**Speed Mode:** If on, when the user is correct, the next fact appears.  
If off, a correct screen appears when correct.

**Practice Mode:** If on, missed facts appear again in the session.  
Teams are done when they have correctly answered every fact.

**Total time:** The total time is listed in the Progress Report which appears after answering the final fact.

**Penalty for leaving early:** If a player passes the starting line before the returning player crosses the line, add a ten second penalty to the team's time.

If you want to enter names, tap on Change User.  
Add the names of the students or their team name.

See the complete app manual at [studysmart.com](http://studysmart.com).

